



# FORTUNE'S U Lazy U



# Angus Ranch

BOB & CHUCK FORTUNE

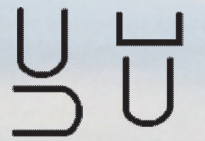
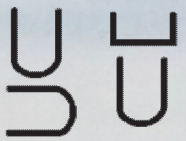


*Annual Production Sale*

**Friday, April 28, 2017**

**12:00 Noon CT**

**Ft. Pierre Livestock, Ft. Pierre, SD**



*50 head 2-year-old Commercial Angus bulls*

*40 head 2-year-old Bred Heifers (sisters to the bulls, due in May)*

# Friday, April 28, 2017

12:00 noon CDT

**Ft. Pierre Livestock Auction**  
**Ft. Pierre, South Dakota**

605-223-2576

[www.ftpierrelivestock.com](http://www.ftpierrelivestock.com)



**Bob Fortune:** 605-344-2200 (h)  
605-488-1003 (c)

**Chuck Fortune:** 605-344-2291 (h)  
605-891-8197 (c)

[www.ulazyuangeranch.com](http://www.ulazyuangeranch.com)



**GUARANTEE:** Bulls – 1st breeding season.

Heifers – sell as pregnant on sale day.

**VOLUME DISCOUNT ON BULLS:** 5% discount for 5 head or more.

**HEALTH:** All bulls are on a complete health program and will be accompanied by health papers for shipment. All animals in the sale are on a complete vaccination program. Both bulls and heifers have been vaccinated with IBR, BVD Type I & II, PI13, BRSV, Pasturella, 7-way, Haemophilus, and Poured. All females are Brucellosis and Scour Guard vaccinated.

Dr. Bill Headlee, DVM, Kadoka ultrasound confirmed the bred females. All females will be re-examined within 2 days of sale.

**FERTILITY TESTING:** All bulls have been fertility tested prior to sale and guaranteed to be breeders.

**INTERNET BIDDING:** [cattleusa.com](http://cattleusa.com)

***If you can't make the sale, cattle are available for viewing at the ranch anytime by contacting Bob or Chuck or on our website: [ulazyuangeranch.com](http://ulazyuangeranch.com). We can take your confidential bid or internet viewing and bidding is available.***



Welcome to our 2017 Production Sale,

Philosophy: U Lazy U Angus Ranch is committed to raising the best cows we can – the bulls are a by product... some bull calves were just too nice to cut. Since 1990 we have sold commercial bulls by Private Treaty.

Our goal is to produce cows that are problem free and profitable. Problem free cows means that any animal that needs added attention gets culled.

U Lazy U Ranch calves out in the pasture in May and June away from home. Our cows have great maternal traits to protect their calf and get it up and nursing without our help.

We use low stress handling to promote a gentle disposition in both cows and bulls.

Our calves excel in the feedlot, on the rail, and are noted for marbling and carcass quality.

Thank you for your business and interest in U Lazy U cattle.

Respectfully,  
Bob & Ruth Fortune  
Chuck & Evie Fortune

**BRED AND RAISED FOR PERFORMANCE  
WITHOUT PAMPERING.**



# HOOVER DAM SONS



**Reg. No.:** #16124994  
**Birth Date:** 01/25/2008  
**Tattoo:** G18

S A F CONNECTION  
 SYDGEN C C & 7  
 SYDGEN FOREVER LADY 4087  
 TC GRIDIRON 258  
**ERICA OF ELLSTON C124**  
 ERICA OF ELLSTON V65

CED	BW	WW	YW	SC	CEM	MILK	CW	MARB	RE	FAT	SW	SF	SG	SB
8	-.4	46	88	.93	7	27	33	.82	1.10	-.003	57.48	51.62	50.74	134.26

- Hoover Dam has made his mark on the nation's cow herd not by touting a few extreme EPDs, but as being a balanced-trait bull with no caution flags. He possesses a unique ability to produce calving ease, muscle, carcass quality, docility, and phenomenal daughters. Hoover Dam now has over 14,000 progeny through AHIR in over 1,400 herds. He has been among the top 15 bulls of the breed the past five years for progeny registrations!
- Hoover Dam semen sales have remained incredibly strong due to repeat commercial demand – buyers cite his predictable calving ease, calf crop uniformity and highly productive, functional daughters as their biggest reasons for repeat usage.
- Daughters are sound made, impeccably uttered females with great manners and slick hair coats. Hoover Dam has earned Pathfinder honors.
- There is no other bull in the breed that can match Hoover Dam's combined Marbling and Ribeye EPDs with his accuracy! It is extremely rare for such expressive muscle to come with calving ease!
- The Hoover Dam progeny have exceptional thickness, especially for a bull with such a proven low birth weight. They have eye appeal, power and mass in a moderate framed package.



Tag	Scrotal Measurement						BW	Actual WW	WW Ratio	Yearling Wt. Weight	YW Ratio	Weight 2/16/17	Ratio			
<b>540</b>	40.4						75	692	108	846	108	1250	103			
Igenity*	Index	BW	CED	CEM	HP	Doc	Milk	MW	ADG	RFI	WW	Tend	Marb	REA	Fat	CW
	6.45	4	7	6	7	7	6	5	7	6	6	9	5	6	7	6
<b>541</b>	39.6						80	700	109	840	108	1340	111			
Igenity*	Index	BW	CED	CEM	HP	Doc	Milk	MW	ADG	RFI	WW	Tend	Marb	REA	Fat	CW
	6.4	5	6	6	6	6	7	5	7	6	6	10	7	6	8	6

# HOOVER DAM SONS



Tag	Scrotal Measurement						BW	Actual WW	WW Ratio	Yearling Wt. Weight	YW Ratio	Weight 2/16/17	Ratio			
542	39.4						58	684	107	868	111	1390	115			
Igenity*	Index	BW	CED	CEM	HP	Doc	Milk	MW	ADG	RFI	WW	Tend	Marb	REA	Fat	CW
	6.4	5	7	7	7	5	6	6	7	7	8	7	6	6	7	7

543	39.8						65	720	113	870	111	1358	112			
Igenity*	Index	BW	CED	CEM	HP	Doc	Milk	MW	ADG	RFI	WW	Tend	Marb	REA	Fat	CW
	6.2	4	7	6	6	6	6	5	7	6	7	8	6	6	7	6

544	41.6						70	702	109	846	108	1256	103			
Igenity*	Index	BW	CED	CEM	HP	Doc	Milk	MW	ADG	RFI	WW	Tend	Marb	REA	Fat	CW
	6	6	6	6	6	6	7	6	6	6	7	6	6	6	7	7

545	38.2						80	700	109	836	107	1294	106			
Igenity*	Index	BW	CED	CEM	HP	Doc	Milk	MW	ADG	RFI	WW	Tend	Marb	REA	Fat	CW
	6.6	5	7	7	7	6	7	4	6	5	7	7	7	7	7	6

Tag	Scrotal Measurement						BW	Actual WW	WW Ratio	Yearling Wt. Weight	YW Ratio	Weight 2/16/17	Ratio
546	37.9						75	702	110	826	106	1240	102

548	41.9						70	742	116	904	116	1386	114			
Igenity*	Index	BW	CED	CEM	HP	Doc	Milk	MW	ADG	RFI	WW	Tend	Marb	REA	Fat	CW
	6.35	4	7	7	6	6	7	5	7	7	6	9	6	6	7	6

549	39.0						75	748	117	918	118	1428	117			
Igenity*	Index	BW	CED	CEM	HP	Doc	Milk	MW	ADG	RFI	WW	Tend	Marb	REA	Fat	CW
	6.4	4	7	7	7	6	7	5	6	6	6	10	6	6	7	5

550	39.0						80	744	116	894	115	1458	120			
Igenity*	Index	BW	CED	CEM	HP	Doc	Milk	MW	ADG	RFI	WW	Tend	Marb	REA	Fat	CW
	6.6	4	7	7	7	6	7	5	7	7	8	10	6	7	8	6



**CATTLE THAT WORK FOR YOU... NOT THE OTHER WAY AROUND.**



# HOOVER DAM SONS

Tag	Scrotal Measurement						BW	Actual WW	WW Ratio	Yearling Wt. Weight	YW Ratio	Weight 2/16/17	Ratio			
551	37.4						80	674	105	826	106	1350	111			
Igenity®	Index	BW	CED	CEM	HP	Doc	Milk	MW	ADG	RFI	WW	Tend	Marb	REA	Fat	CW
	6.15	4	7	7	6	6	8	5	6	6	7	9	6	6	7	6

552	41.8						75	660	103	832	107	1290	106
-----	------	--	--	--	--	--	----	-----	-----	-----	-----	------	-----

553	41.4						75	630	98	774	99	1258	103			
Igenity®	Index	BW	CED	CEM	HP	Doc	Milk	MW	ADG	RFI	WW	Tend	Marb	REA	Fat	CW
	6.15	4	7	7	6	6	6	5	5	6	6	8	7	6	7	6

554	39.0						70	640	100	780	100	1216	100			
Igenity®	Index	BW	CED	CEM	HP	Doc	Milk	MW	ADG	RFI	WW	Tend	Marb	REA	Fat	CW
	5.75	3	7	7	6	5	6	5	5	5	5	10	6	6	7	5

555	39.0						80	688	108	858	110	1264	104
-----	------	--	--	--	--	--	----	-----	-----	-----	-----	------	-----

Tag	Scrotal Measurement						BW	Actual WW	WW Ratio	Yearling Wt. Weight	YW Ratio	Weight 2/16/17	Ratio			
556	38.5						70	742	116	850	109	1298	107			
Igenity®	Index	BW	CED	CEM	HP	Doc	Milk	MW	ADG	RFI	WW	Tend	Marb	REA	Fat	CW
	6.2	5	6	6	6	6	6	5	7	6	6	7	6	6	7	6

557	40.6						75	742	116	906	116	1348	111			
Igenity®	Index	BW	CED	CEM	HP	Doc	Milk	MW	ADG	RFI	WW	Tend	Marb	REA	Fat	CW
	5.8	6	5	6	6	6	6	5	5	6	7	7	6	6	7	6

558	40.0						62	796	124	948	122	1484	122			
Igenity®	Index	BW	CED	CEM	HP	Doc	Milk	MW	ADG	RFI	WW	Tend	Marb	REA	Fat	CW
	5.95	4	7	7	6	6	6	5	5	6	6	9	6	7	7	6

560	36.1						80	612	96	802	103	1300	107			
Igenity®	Index	BW	CED	CEM	HP	Doc	Milk	MW	ADG	RFI	WW	Tend	Marb	REA	Fat	CW
	6.4	4	7	7	7	6	6	5	5	6	6	9	7	6	9	6



# RAINMAKER 368 SON

Reg. No.: 17776248

Birth Date: 03/26/2013

Tattoo: 368B

SITZ RAINMAKER 6169  
 SITZ RAINMAKER 714X  
 SITZ MISS BURGESS 1591  
 S A V PIONEER 7301  
 FORTUNES PRINCESS 026  
 FORTUNE'S DESIGNER 021

FULL BROTHER TO SITZ RAINMAKER 714X



CED	BW	WW	YW	CEM	MILK	CW
8	.7	48	82	9	20	30
MARB	RE	FAT	SW	SF	SG	SB
.25	.58	.042	40.85	32.54	20.63	89.79

Tag	Scrotal Measurement	BW	Actual WW	WW Ratio	Yearling Wt. Weight	YW Ratio	Weight 2/16/17	Ratio
510	44.5	NR	804	115	932	116	1400	108

# RAINMAKER 387 SONS

Reg. No.: 17776263

Birth Date: 05/15/2013

Tattoo: 387B

SITZ RAINMAKER 6169  
 SITZ RAINMAKER 714X  
 SITZ MISS BURGESS 1591  
 S A V 004 TRAVELER 4412  
 FORTUNES ELITE LADY 0125  
 FORTUNE 930 ELITE LADY 651



CED	BW	WW	YW	CEM	MILK	CW
9	.4	64	101	10	23	36
MARB	RE	FAT	SW	SF	SG	SB
.34	.49	.021	60.36	55.75	24.82	108.34

Tag	Scrotal Measurement	BW	Actual WW	WW Ratio	Yearling Wt. Weight	YW Ratio	Weight 2/16/17	Ratio								
512	42.4	NR	725	104	904	116	1362	105								
Igenity*	Index	BW	CED	CEM	HP	Doc	Milk	MW	ADG	RFI	WW	Tend	Marb	REA	Fat	CW
	5.95	6	6	6	5	5	7	5	9	5	6	6	5	4	7	6
522	40.5	NR	616	88	820	103	1432	110								
Igenity*	Index	BW	CED	CEM	HP	Doc	Milk	MW	ADG	RFI	WW	Tend	Marb	REA	Fat	CW
	5.8	5	6	6	6	5	6	5	7	6	6	6	5	5	5	6
532	39.3	NR	622	89	790	99	1300	100								
Igenity*	Index	BW	CED	CEM	HP	Doc	Milk	MW	ADG	RFI	WW	Tend	Marb	REA	Fat	CW
	6.05	5	6	6	7	5	6	5	7	6	6	9	5	5	8	6

**THIS IS PROBABLY THE BEST CROP OF BULLS WE HAVE EVER RAISED.**



# GAME DAY 033 SONS

Reg. No.: 16877866  
 Birth Date: 04/01/2010  
 Tattoo: 033B

GDAR GAME DAY 449  
 SITZ GAME DAY 8636  
 SITZ EISA EVERGREEN 3940  
 SITZ ALLIANCE 6595  
 FORTUNES 6595 ETHELDA 559  
 FORTUNES DT ETHELDA 250



SITZ GAME DAY 8636

CED	BW	WW	YW	CEM	MILK	CW
1	2.9	44	88	4	28	28
MARB	RE	FAT	SW	SF	SG	SB
.48	.14	.040	33.55	46.12	24.80	91.78

Tag	Scrotal Measurement							BW	Actual WW	WW Ratio	Yearling Wt. Weight	YW Ratio	Weight 2/16/17	Ratio		
521								NR	710	101	880	110	1498	115		
Igenity*	Index	BW	CED	CEM	HP	Doc	Milk	MW	ADG	RFI	WW	Tend	Marb	REA	Fat	CW
	6	5	6	6	6	5	7	6	7	7	7	9	6	6	6	6
519	40.4							NR	668	95	854	107	1484	114		
Igenity*	Index	BW	CED	CEM	HP	Doc	Milk	MW	ADG	RFI	WW	Tend	Marb	REA	Fat	CW
	6	6	6	6	6	6	8	5	6	5	6	9	6	4	6	5
526	37.5							NR	590	84	800	100	1382	106		
Igenity*	Index	BW	CED	CEM	HP	Doc	Milk	MW	ADG	RFI	WW	Tend	Marb	REA	Fat	CW
	5.95	5	7	7	6	5	6	5	5	8	7	3	7	4	7	6
530	39.9							NR	634	91	728	91	1330	102		
Igenity*	Index	BW	CED	CEM	HP	Doc	Milk	MW	ADG	RFI	WW	Tend	Marb	REA	Fat	CW
	6	6	6	6	6	5	6	5	7	5	6	9	6	4	7	5

# RITO 707 GRANDSON

Reg. No.: +13066860  
 Birth Date: 09/14/1997  
 Tattoo: 75

RITO N BAR  
 R R RITO 707  
 ERISKAY OF ROLLIN ROCK 3  
 IDEAL 1418 OF 8103 4286  
 IDEAL 3407 OF 1418 076  
 IDEAL 076 OF 692 8375

CED	BW	WW	YW	CEM	MILK	CW
4	1.3	49	84	-2	17	47
MARB	RE	FAT	SW	SF	SG	SB
-.23	.66	-.001	50.19	42.79	-2.94	104.29

Tag	Scrotal Measurement							BW	Actual WW	WW Ratio	Yearling Wt. Weight	YW Ratio	Weight 2/16/17	Ratio		
527	47.0							NR	696	99	888	111	1454	112		
Igenity*	Index	BW	CED	CEM	HP	Doc	Milk	MW	ADG	RFI	WW	Tend	Marb	REA	Fat	CW
	5.65	6	5	5	6	5	6	5	6	6	6	6	6	5	8	6

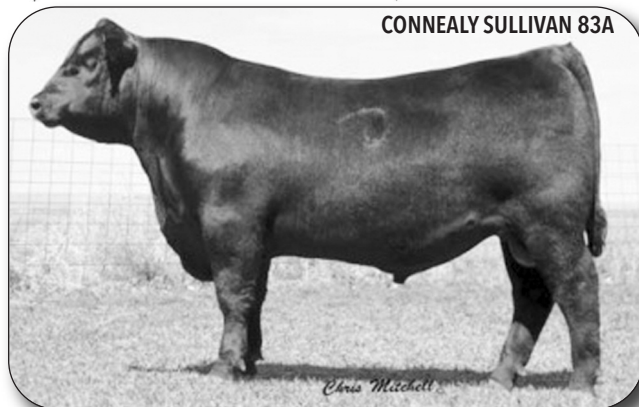
# SULLIVAN 148 SONS

Reg. No.: +17194322

Birth Date: 03/27/2011

Tattoo: 148B

CONNEALY TOBIN  
**CONNEALY SULLIVAN 83A**  
 BRESHA OF CONANGA 1251  
 S A V 004 TRAVELER 4412  
**FORTUNES 4412 BLOSSOM 720**  
 FORTUNES TRENDY BLOSSOM 251



CED	BW	WW	YW	CEM	MILK	CW
5	1.2	52	91	11	21	48
MARB	RE	FAT	SW	SF	SG	SB
.40	.47	.043	43.25	45.94	21.66	124.46

Tag	Scrotal Measurement						BW	Actual WW	WW Ratio	Yearling Wt. Weight	YW Ratio	Weight 2/16/17	Ratio			
<b>506</b>	41.2						NR	774	111	956	119	1416	109			
Igenty*	Index	BW	CED	CEM	HP	Doc	Milk	MW	ADG	RFI	WW	Tend	Marb	REA	Fat	CW
	6.45	5	7	6	7	6	7	5	7	7	8	6	6	6	7	7
<b>524</b>	41.8						NR	630	90	806	101	1252	96			
Igenty*	Index	BW	CED	CEM	HP	Doc	Milk	MW	ADG	RFI	WW	Tend	Marb	REA	Fat	CW
	6	5	6	6	6	5	6	5	6	6	7	9	7	5	7	7
<b>528</b>	39.5						NR	668	95	870	109					
Igenty*	Index	BW	CED	CEM	HP	Doc	Milk	MW	ADG	RFI	WW	Tend	Marb	REA	Fat	CW
	6.55	6	7	7	6	6	7	5	8	6	8	9	6	6	5	8

# SINCLAIR X-PLUS 3XX75 SON

Reg. No.: 17539037

Birth Date: 02/21/2013

Tattoo: 3XX75

N BAR EMULATION EXT  
**SINCLAIR EMULATION XXP**  
 N BAR PRIMROSE Y3051  
 RITO REVOLVE OR5  
**SINCLAIR LADY IDA 8R47 5NI13**  
 SINCLAIR LADY IDA 5NI13 H375



CED	BW	WW	YW	CEM	MILK	CW
3	.5	48	89	7	16	35
MARB	RE	FAT	SW	SF	SG	SB
.28	-.25	.029	33.76	45.12	10.06	90.49

Tag	Scrotal Measurement						BW	Actual WW	WW Ratio	Yearling Wt. Weight	YW Ratio	Weight 2/16/17	Ratio			
<b>515</b>	38.9						NR	762	109	956	119	1346	104			
Igenty*	Index	BW	CED	CEM	HP	Doc	Milk	MW	ADG	RFI	WW	Tend	Marb	REA	Fat	CW
	5.6	6	6	6	6	5	6	5	5	5	6	5	6	4	7	6



# LUCKY 7 IN FOCUS SONS

Reg. No.: 17126913  
 Birth Date: 02/03/2011  
 Tattoo: 117

S A F FOCUS OF E R  
 MYTTY IN FOCUS  
 MYTTY COUNTESS 906  
 SITZ TRAVELER 7926  
 LUCKY 7 HENRIETTA 972  
 LUCKY 7 HENRIETTA 320



CED	BW	WW	YW	CEM	MILK	CW
8	.4	46	76	11	25	22
MARB	RE	FAT	SW	SF	SG	SB
.68	.21	-.003	45.76	23.34	38.90	90.77

Tag	Scrotal Measurement						BW	Actual WW	WW Ratio	Yearling Wt. Weight		YW Ratio	Weight 2/16/17 Ratio			
511	37.8						NR	698	100	858		107	1280 98			
Igenity*	Index	BW	CED	CEM	HP	Doc	Milk	MW	ADG	RFI	WW	Tend	Marb	REA	Fat	CW
	6.55	5	7	7	6	6	6	5	7	6	7	7	7	5	6	6
518	40.5						NR	692	99	866		108	1380 106			
Igenity*	Index	BW	CED	CEM	HP	Doc	Milk	MW	ADG	RFI	WW	Tend	Marb	REA	Fat	CW
	6.4	5	6	7	7	5	7	5	7	6	6	7	6	4	6	6
523	39.4						NR	640	91	816		102	1324 102			
Igenity*	Index	BW	CED	CEM	HP	Doc	Milk	MW	ADG	RFI	WW	Tend	Marb	REA	Fat	CW
	6.2	4	8	7	7	4	7	5	6	6	7	4	7	5	9	6
531	40.5						NR	700	100	926		116	1374 106			
Igenity*	Index	BW	CED	CEM	HP	Doc	Milk	MW	ADG	RFI	WW	Tend	Marb	REA	Fat	CW
	6.6	5	7	7	7	6	7	5	7	6	7	9	6	5	7	6

Again, thank you for your interest in U Lazy U Angus Ranch cattle.  
 We sincerely appreciate our customers! Come to our sale and have lunch on us.

---



---



---



---



---



---



---

www.ulazyuangeranch.com – Sale online at cattleusa.com

# 4412 X 0930 SONS



S A V 8180 TRAVELER 004  
S A V 004 TRAVELER 4412  
S A V ERICA 0178

G D A R TRAVELER 044  
SITZ TRAVELER 0930  
SITZ PRIDE 1087

Tag	Scrotal Measurement						BW	Actual WW	WW Ratio	Yearling Wt. Weight		YW Ratio	Weight 2/16/17		Ratio	
<b>508</b>	41.0						NR	760	109	960		120	1380		106	
Igenity*	Index	BW	CED	CEM	HP	Doc	Milk	MW	ADG	RFI	WW	Tend	Marb	REA	Fat	CW
	5.25	7	4	5	6	5	5	5	5	6	6	4	5	4	7	6
<b>514</b>	37.5						NR	710	101	916		114	1304		100	
Igenity*	Index	BW	CED	CEM	HP	Doc	Milk	MW	ADG	RFI	WW	Tend	Marb	REA	Fat	CW
	5.65	6	6	6	7	4	6	5	5	6	6	4	6	4	7	6
<b>533</b>	40.6						NR	744	106	882		110	1302		100	
Igenity*	Index	BW	CED	CEM	HP	Doc	Milk	MW	ADG	RFI	WW	Tend	Marb	REA	Fat	CW
	4.8	5	5	5	5	4	5	5	3	5	5	8	7	5	7	5
<b>501</b>	41.4						NR	812	116	998		125	1542		118	
Igenity*	Index	BW	CED	CEM	HP	Doc	Milk	MW	ADG	RFI	WW	Tend	Marb	REA	Fat	CW
	6.2	6	6	6	6	6	6	5	7	6	7	10	6	6	5	7
<b>502</b>	38.0						NR	704	101	858		107	1384		106	
Igenity*	Index	BW	CED	CEM	HP	Doc	Milk	MW	ADG	RFI	WW	Tend	Marb	REA	Fat	CW
	7	4	7	7	7	7	6	5	7	7	7	10	7	6	7	6
<b>505</b>	43.1						NR	830	118	884		110	1380		106	
Igenity*	Index	BW	CED	CEM	HP	Doc	Milk	MW	ADG	RFI	WW	Tend	Marb	REA	Fat	CW
	6.45	6	5	6	7	6	7	5	6	6	6	5	7	5	7	6
<b>507</b>	39.3						NR	758	108	908		113	1380		106	
<b>525</b>							NR	688	98	880		110	1390		107	
<b>529</b>	39.0						NR	690	99	800		100	1322		102	
Igenity*	Index	BW	CED	CEM	HP	Doc	Milk	MW	ADG	RFI	WW	Tend	Marb	REA	Fat	CW
	5.75	5	8	7	6	4	6	5	6	4	6	7	6	4	8	6



**DON'T COMPARE THEM TO FEEDLOT BULLS... THESE BULLS WILL LOOK BETTER EVERY DAY YOU OWN THEM.**



# Igenity® - Confident Selection

The Igenity® Angus DNA portfolio, contains highly accurate profilers for Angus commercial cow/calf producers to use in selection, management and marketing of replacement heifers and commercial bulls. Igenity Angus profilers target thousands of powerful genes selected because of their effect on profits in commercial cow herds. The Igenity Angus profile incorporates a scoring system of 1-10.

## Maternal Traits

**Birth Weight** – Variation in birth weight a heifer or bull will pass along to its offspring.

**Calving Ease Direct (CED)** – Percentage of unassisted births. Genetic factors such as birth weight and shape of the calf contribute to CED. A higher value is greater calving ease.

**Calving Ease Maternal (CEM)** – The probability that a first-calf heifer will calve unassisted. Includes all genetic factors that impact a heifer’s ability to calve, such as pelvic area and her genetic contribution to birth weight. A higher value is greater calving ease.

**Heifer Pregnancy Rate (HPR)** – A higher value is desired indicating higher fertility and conception rates.

**Docility (DOC)** – Higher scores indicate a higher percentage of calves with a calmer disposition.

**Milk** – Is expressed as pounds of calf weaning weight affected by the milk production of a calf’s dam.

**Residual Average Daily Gain** – This measure is an indicator of feed efficiency. The higher Residual Average Daily Gain indicates greater feed efficiency.

## Performance Traits

**Average Daily Gain (ADG)** – Based on pounds of gain per day. The Igenity score for ADG identifies an animal’s genetic potential for postweaning growth.

**Weaning Weight** – A predictor of pre-weaning growth in pounds

## Carcass Traits

**Tenderness (TEND)** – Animals’ genetic potential for carcass tenderness as measured by the Warner-Bratzler Shear Force (WBSF) test. A higher score indicates greater tenderness.

**USDA Marbling (MARB)** – Marbling score indicates the degree of marbling in the rib eye at the 12<sup>th</sup> rib rated in USDA marbling units.

**Ribeye Area (REA)** – Ribeye Area estimates muscling in a beef carcass, larger number indicates larger ribeye.

**Fat Thickness (FAT)** – Higher fat thickness scores equate to lower lean yield

**Carcass Weight** – A predictor of genetic variation in hot carcass weight.

Igenity Genetic Effects Table

Igenity Genetic Effects Table															
	Maternal Traits							Performance Traits		Carcass Traits					
Igenity Angus Scores	Birth Weight	Calving Ease Direct	Calving Ease Maternal	Docility	Heifer Pregnancy Rate	Milk	Mature Weight	Average Daily Gain	Residual Average Daily Gain	Weaning Weight	Tenderness	USDA Marbling Score	Ribeye Area	Fat Thickness	Carcass Weight
	(lbs.)	(%)	(%)	(%)	(%)	(lbs.)	(lbs.)	(lbs.)	(lbs.)	(lbs.)	(lbs. WBSF)	(USDA marb. units)	(sq. ins.)	(ins.)	(lbs.)
10	6.5	16.3	16.1	26.3	5.6	34	144	0.34	0.26	63.1	-1.15	0.95	0.83	0.12	53.3
9	5.8	14.5	14.3	23.4	5.0	31	129	0.30	0.23	57.1	-1.00	0.84	0.74	0.10	50.3
8	5.0	12.7	12.5	20.4	4.3	27	113	0.27	0.20	50.2	-0.95	0.74	0.64	0.09	47.4
7	4.3	10.9	10.7	17.5	3.7	24	98	0.24	0.17	45.0	-0.75	0.63	0.55	0.08	44.4
6	3.6	9.1	9.0	14.6	3.1	22	83	0.21	0.15	39.8	-0.60	0.53	0.46	0.06	38.5
5	2.9	7.2	7.2	11.7	2.5	18	68	0.18	0.12	34.6	-0.55	0.42	0.37	0.05	32.6
4	2.2	5.4	5.4	8.8	1.9	13	53	0.14	0.09	27.7	-0.40	0.32	0.28	0.04	26.6
3	1.4	3.6	3.6	5.8	1.2	9	38	0.11	0.06	17.3	-0.20	0.21	0.18	0.03	20.7
2	0.7	1.8	1.8	2.9	0.6	5	15	0.05	0.03	6.9	-0.10	0.11	0.09	0.01	5.9
1	0	0	0	0	0	0	0	0	0	0	0	0	0	0	0

Comparing Igenity Scores or Profiled Animals

Heifer Pregnancy Rate (HPR)	Igenity Score	Genetic Effect	Description
Animal A	8	4.3%	Animal A will produce daughters with a 3.1% higher probability of conceiving during a normal breeding season compared to daughters of Animal B.
Animal B	3	1.2%	
		3.1%	

FORTUNE'S  
**U Lazy U**  
**Angus Ranch**

Bob & Chuck Fortune  
24801 Iron Heart Road  
Belvidere, SD 57521

Bob Fortune: (H) 605-344-2200  
(C) 605-488-1003

Chuck Fortune: (H) 605-344-2291  
(C) 605-891-8197

*Annual Production Sale*

**April 28, 2017**

**12:00 Noon**

**Ft. Pierre Livestock,  
Ft. Pierre, SD**

[www.ulazyuangusranch.com](http://www.ulazyuangusranch.com)  
Sale online: [www.cattleusa.com](http://www.cattleusa.com)

Address Service Requested



**Bulls That Just Work**